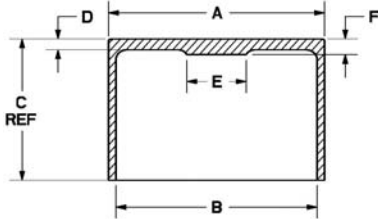




TAPPETS / CAM FOLLOWERS

Manufacturing Lightweight Race Proven Tappets For Over 35 Years



Whether you're looking for lightweight F1 style tappets for your drag bike, stock replacement or extreme duty PVD coated tappets for your 4-stroke single, KPMI is **The Source** for tappets and all of your valve train needs. If KPMI doesn't manufacture what you are looking for, then call us direct and ask to speak with one of our engineers to discuss your specific needs. www.blackdiamondvalves.com



KPMI Part No.	A	B	C	D	E	F	Notes
600-099400	20.00mm / 0.7867"	0.740"	0.558"	0.065"	0.200"	0.111"	
600-099650	22.50mm / 0.8850"	0.835"	0.669"	0.072"	0.237"	0.091"	
600-100001	26.00mm / 1.0232"	0.970"	0.790"	0.080"	0.236"	0.115"	
600-100200	28.00mm / 1.1016"	1.022"	0.860"	0.100"	0.255"	0.135"	
600-100201	28.00mm / 1.1016"	1.022"	0.860"	0.100"	0.255"	0.167"	
600-100202	28.00mm / 1.1020"	1.038"	0.765"	0.075"	0.300"	0.098"	
600-100203	28.00mm / 1.1016"	1.025"	0.800"	0.078"	0.310"	0.095"	
600-100204	28.00mm / 1.1020"	1.038"	0.765"	0.080"	0.300"	0.148"	
600-100250	28.50mm / 1.1220"	1.058"	0.765"	0.080"	0.300"	0.098"	

KPMI Part No.	A	B	C	D	E	F	Notes
600-099800	24.00mm / 0.9450"	0.895"	0.669"	0.079"	0.300"	0.106"	
600-100050	26.50mm / 1.0430"	0.992"	0.748"	0.079"	0.300"	0.106"	

KPMI Part No.	A	B	C	D	E	F	Notes
600-100500	31.00mm / 1.2190"	1.166"	0.975"	0.079"	0.325"	0.108"	
600-100650	32.50mm / 1.2790"	1.216"	0.910"	0.079"	0.325"	0.100"	
600-100700	33.00mm / 1.2980"	1.223"	1.025"	0.090"	0.312"	0.115"	
600-100750	33.50mm / 1.3184"	1.223"	1.025"	0.090"	0.312"	0.115"	
600-100800	34.00mm / 1.3380"	1.258"	1.025"	0.090"	0.312"	0.115"	
600-100900	35.00mm / 1.3765"	1.300"	1.000"	0.105"	0.312"	0.130"	
600-101095	36.95mm / 1.4550"	1.388"	1.040"	0.090"	0.400"	0.105"	NEW!
600-101100	37.00mm / 1.4562"	1.378"	1.040"	0.135"	0.400"	0.145"	
600-101150	37.50mm / 1.4760"	1.398"	1.040"	0.135"	0.400"	0.145"	
600-101200	38.00mm / 1.4955"	1.418"	1.040"	0.135"	0.400"	0.145"	
600-101250	38.50mm / 1.5152"	1.438"	1.040"	0.135"	0.400"	0.145"	
600-101300	39.00mm / 1.5350"	1.457"	1.040"	0.135"	0.400"	0.145"	

KPMI Part No.	A	B	C	D	E	F	Notes
600-099801	24.00mm / 0.9450"	0.895"	0.669"	0.079"	0.300"	0.106"	PVD Coated
600-100051	26.50mm / 1.0430"	0.992"	0.748"	0.079"	0.300"	0.106"	PVD Coated